

Technical Specifications	
<b>Processor</b>	Intel XScale PXA270 312MHz
<b>Memory</b>	Flash ROM 64MB SD RAM 64MB
<b>Display</b>	640x480 (VGA) 5.7" Touch Screen with LED Backlit*
<b>Connectivity</b>	Integrated WLAN 802.11b/g In-built 10/100Mbps Ethernet Card*
<b>Dimensions</b>	146mm (w) x 16.9mm (d) x 240mm (h)
<b>Audio</b>	Speaker, Stereo Phone jack, Microphone
<b>SDMMC Card</b>	SD/MMC type memory
<b>USB</b>	USB 2.0 Slave & Host
<b>Operating System</b>	Microsoft Windows CE 5.0 professional plus version
<b>Power</b>	Advanced Li-ion battery (6000mAh)*

## Designed for schools and colleges

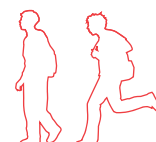
A5 size folder device capable of running Bromcom attendance, assessment and behaviour modules. It connects wirelessly to the school-wide Wi-Fi network (see overleaf) allowing instant data collection and return. This device is ideal for use as a school or college wide solution.

Wi-Fi ready and 'instant on' Hand-held PDA's can be used in conjunction with e-Registration integrating with all major school or college MIS Systems including SIMS, CMIS, Phoenix Gold and RM Integris.

*\* Features are unique to Bromcom and are specifically incorporated in the design to suit the use for education.*

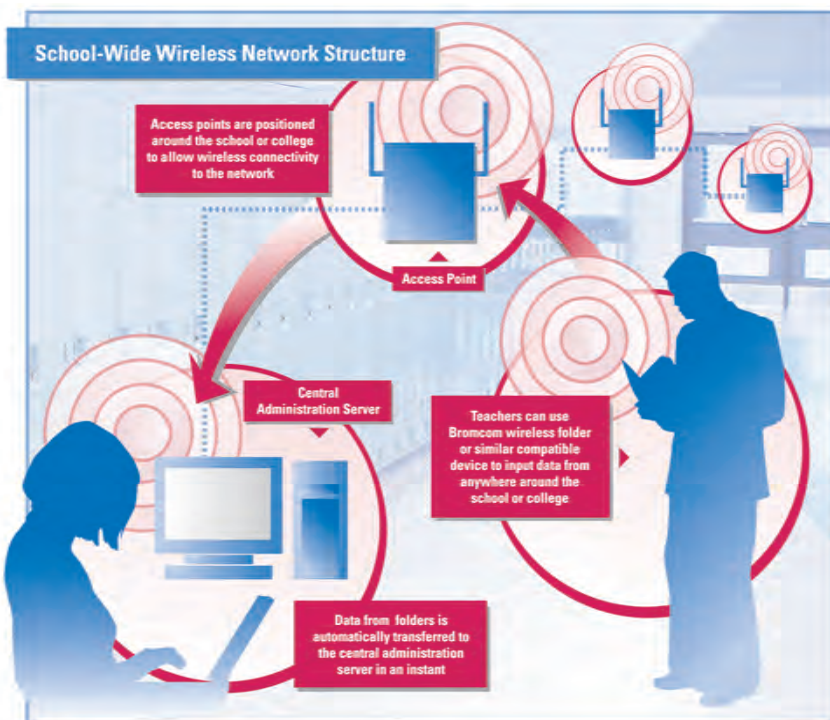
## Features

- Industry standard built in Wi-Fi wireless capable of WEP, WPA and WPA2 authentication
- Large colour touch screen
- e-Registration via WinFolder-PK and grade collection via vForms
- E-Mail Client for Internet E-mail
- Web access via MS Internet Explorer
- Viewers for Pocket Word, Excel and PowerPoint
- Robust & durable designed in traditional Bromcom folder style
- Long battery life



## School-wide Wi-Fi networking for recording attendance, behaviour, assessment and other student data

Since 1992 Bromcom has pioneered wireless networking in schools and colleges utilising extremely efficient and highly secure patented technology. Initially the wireless networks used had a very narrow bandwidth that is loosely termed 'the ISM standard'. In recent years this enterprising work on the narrow band networks has enabled Bromcom to take full advantage of the broader bandwidth Wi-Fi standards (IEEE 802.11b/g). Significant improvements have been introduced as well as various tools to help make school-wide wireless networking both cost effective and high performance. Besides Bromcom's 'ultra efficient' communications approach, data security has been enhanced by ensuring that the Bromcom administrative server does not require an SQL port or Web port (port 80) to be open between the Administration and Curriculum Network.



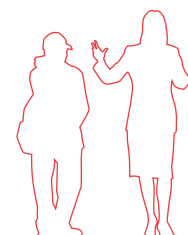
Typically, when the Bromcom attendance system is deployed in a school or college, the system is reliant on having a school-wide networking infrastructure in place. This networking can be wireless or hardwired or a combination of both which will be totally transparent to the system users.

A user in any part of the school or college can use a laptop, (using WinFolder), a Pocket-PC, (using WinFolder-PK) or any Bromcom hand-held device, such as the Mini-Tablet or vPDA, to connect to the school Administration network, as long as there is a wireless or cable connection at that location.

This allows immediate 'real time' transfer of data - ideal for applications such as class attendance and supporting the drive to give parents real-time information.

The benefits of this approach are clear. Teachers will get maximum use and flexibility from their hardware wherever they are in the school or college and will always have access to the main school servers. This allows immediate 'real time' transfer of data - ideal for applications such as class attendance.

In all cases, Bromcom's ultra-efficient and secure method to download and update student data is used across our entire product range. Please refer to the "WinFolder Magic" brochure which explains this method of exchanging student data on industry standard networks, compared with other more common, less secure methods.



[www.bromcom.com](http://www.bromcom.com)

For more information on Bromcom's products contact the Sales Department on 020 8695 8080 or e-mail [info@bromcom.com](mailto:info@bromcom.com)

**Bromcom**  
Bromcom Computers Plc  
Kelvin House, Worsley Bridge Road, London SE26 5BS